

## Certificate of Analysis

### Human Adult Purified CD14<sup>+</sup> Monocytes - Cryopreserved Vial

---

Catalog number:	PB14NC- 1 (10 x 10 <sup>6</sup> cells/vial)
Lot Number:	17041496
Source ID:	D326741
Description:	CD14 <sup>+</sup> monocytes were negatively selected via immunomagnetic separation from a leukopheresis collection. After isolation, the CD14 <sup>+</sup> Monocytes were tested for purity and viability by flow cytometry. The CD14 <sup>+</sup> monocytes were cryopreserved in Cryostor CS10 (BioLife Solution, Seattle, WA) using a CoolCell (BioCision, San Diego, CA) freezing container and stored in the vapor phase of liquid nitrogen. The cells are also available in a freshly isolated, non-frozen format.
Source:	Freshly collected Leukopak (Cat# PB001F-1) from HemaCare
Instructions:	Upon arrival, either prepare cells for long term frozen storage in Liquid Nitrogen vapor phase or thaw for further experiments
Principle Markers:	CD14 <sup>+</sup> , CD16 <sup>+</sup> , CD45 <sup>+</sup>
Biosafety:	Cells should be handled following biosafety level 2 procedures. Universal precautions should be utilized when working with these cells. Use aseptic techniques when thawing or handling the cells.

The following donor screening tests have been performed:

CMV testing upon request

**Serological Testing:**

- Syphilis
- Antibody Screen

**Infectious Disease Panel:**

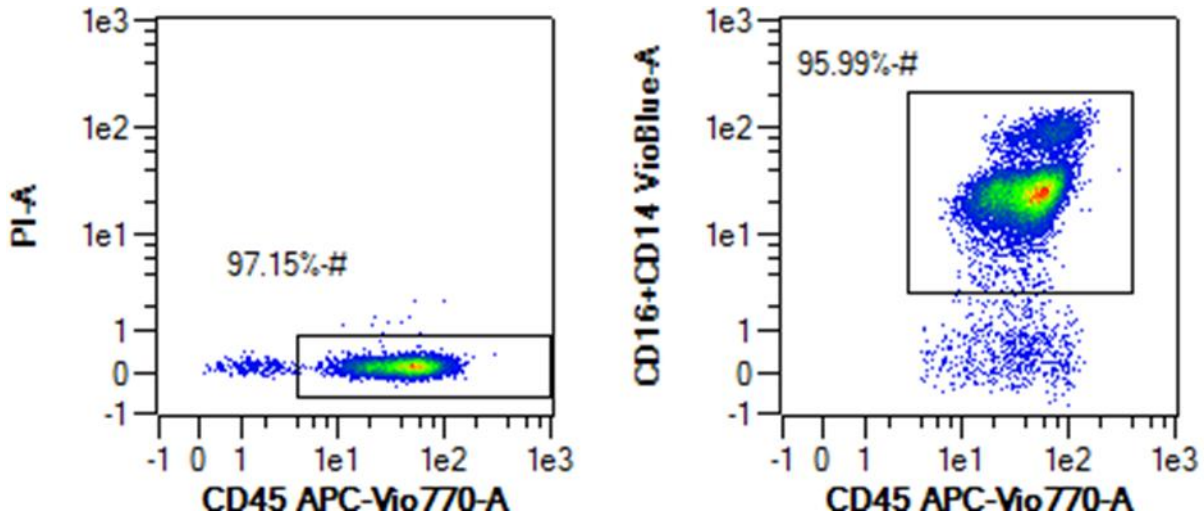
- Hepatitis B Core Antibody (Anti-HBc EIA)
- Hepatitis B Surface Antigen (HBsAg EIA)
- Hepatitis C Virus Antibody (Anti-HCV EIA)
- Human Immunodeficiency Virus Antibody (HIV 1/2 plus O)
- Human T-Lymphotropic Virus Antibody (HTLV-I/II)
- HIV-1/HCV/HBV Nucleic Acid Testing
- WNV Nucleic Acid Testing
- Trypanasoma cruzi Antibody

## Certificate of Analysis

### Human Adult Purified CD14<sup>+</sup> Monocytes - Cryopreserved Vial

Catalog Number: PB14NC- 1 (10 x 10<sup>6</sup> cells/vial) Lot Number: 17041496

#### Flow Cytometry Analysis



Viability is 99.88% based on FSC/PI staining pre-cryopreservation (not shown).

SAMPLE

#### Surface Marker Summary

PI CD45 <sup>+</sup>	CD14 <sup>+</sup> /CD16 <sup>+</sup> Cells
97.15 %	95.99 %

#### Donor Demographics and Lot Specific Information

Source ID	Age	Gender	Ethnicity	Blood Type	Cryopreservation Date
D326741	33	Female	Hispanic/Caucasian	A Pos	January 11, 2017

**Donor Testing Panel Results:** Negative for all donor screening test performed